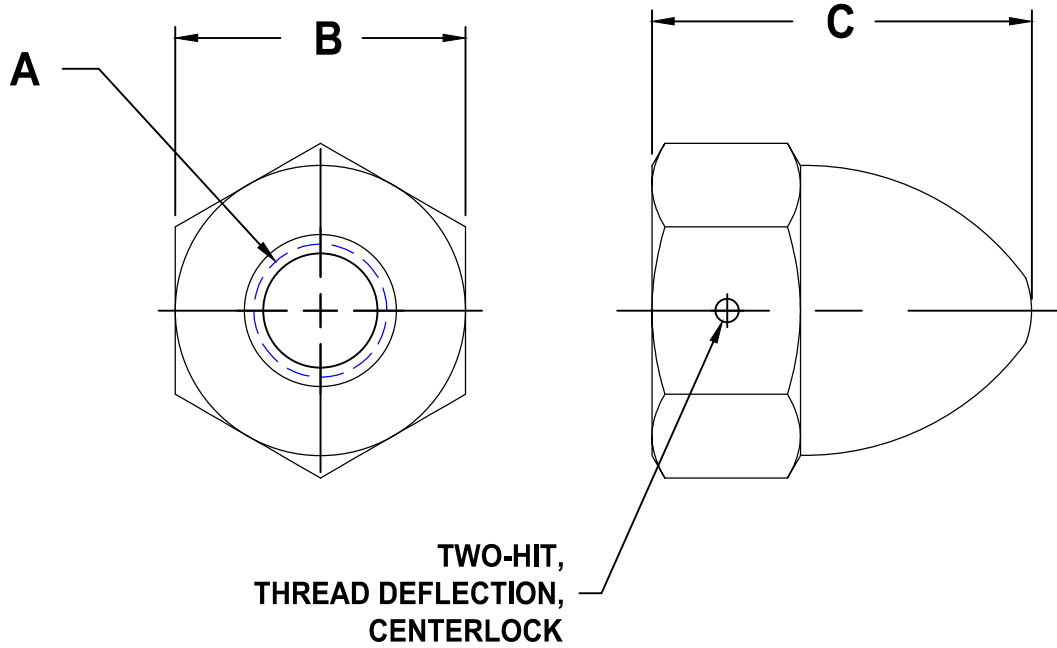


GRADE A - ZINC PLATED *					
" A " COARSE THREAD		" B " WIDTH ACROSS FLATS		" C " THICKNESS	
SIZE	PART NO.	MAX.	MIN.	MAX.	MIN.
10-24	HA1024CAZ	.375	.362	.525	.505
1/4-20	HA1420CAZ	.437	.428	.603	.583
5/16-18	HA51618CAZ	.500	.489	.697	.677
3/8-16	HA3816CAZ	.562	.551	.791	.771
1/2-13	HA1213CAZ	.750	.736	1.033	.995



NOTES:

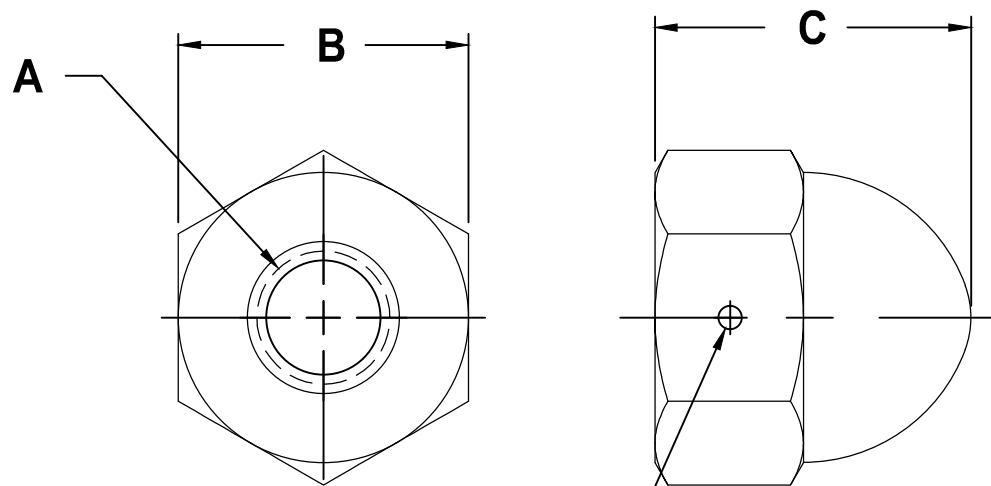
1 - MECHANICAL AND PERFORMANCE REQUIREMENTS PER IFI 100/107

* COMMON FINISHES LISTED - OTHER FINISHES AVAILABLE

**HIGH CROWN,
ACORN NUT**
CENTERLOCK
GRADE A



SCALE	UNITS	DWG TYPE	REV
NONE	INCH	S	NONE



**TWO-HIT,
THREAD DEFLECTION,
CENTERLOCK**

GRADE A - ZINC PLATED*					
" A " COARSE THREAD		" B " WIDTH ACROSS FLATS		" C " THICKNESS	
SIZE	PART NO.	MAX.	MIN.	MAX.	MIN.
6-32	LA1024CAZ	.312	.302	.350	.338
8-32	LA1420CAZ	.344	.332	.350	.338
10-24	LA1024CAZ	.375	.362	.416	.396
1/4-20	LA1420CAZ	.437	.428	.478	.458
5/16-18	LA51618CAZ	.500	.489	.541	.521
3/8-16	LA3816CAZ	.562	.551	.635	.615
1/2-13	LA1213CAZ	.750	.736	.818	.805

NOTES:

1 - MECHANICAL AND PERFORMANCE REQUIREMENTS PER IFI 100/107

* COMMON FINISHES LISTED - OTHER FINISHES AVAILABLE

**LOW CROWN,
ACORN NUT**

CENTERLOCK

GRADE A



SCALE	UNITS	DWG TYPE	REV
NONE	INCH	S	NONE