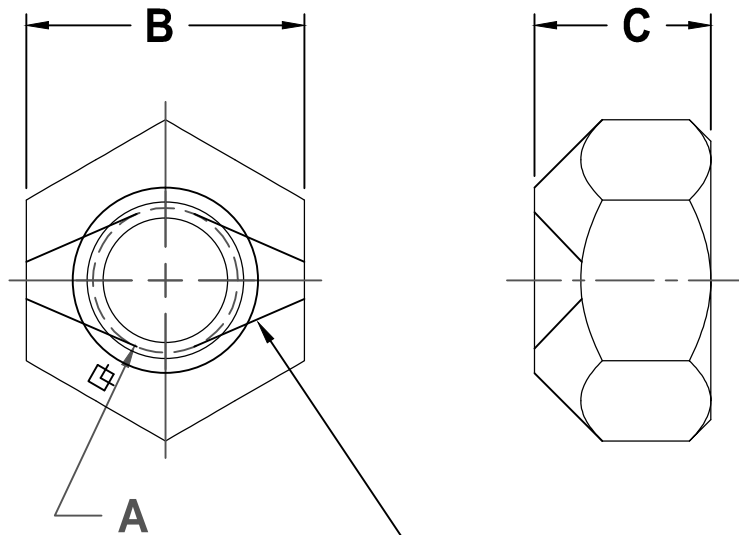
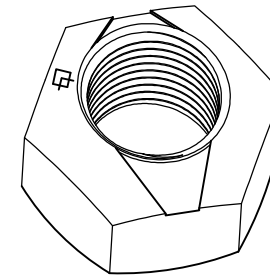


GRADE A - ZINC PLATED *					
" A " COARSE THREAD		" B " WIDTH ACROSS FLATS		" C " THICKNESS	
SIZE	PART NO.	MAX.	MIN.	MAX.	MIN.
1/4-20	AU1420AAZ	.438	.428	.226	.212
5/16-18	AU51618AAZ	.500	.489	.273	.258
3/8-16	AU3816AAZ	.562	.551	.337	.320
7/16-14	AU71614AAZ	.688	.675	.385	.365
1/2-13	AU1213AAZ	.750	.736	.448	.427
5/8-11	AU5811AAZ	.938	.922	.559	.535



OPPOSING THREAD DEFLECTIONS FOR PREVAILING TORQUE



NOTES:

1 - MECHANICAL AND PERFORMANCE REQUIREMENTS PER IFI 100/107

\* COMMON FINISHES LISTED - OTHER FINISHES AVAILABLE

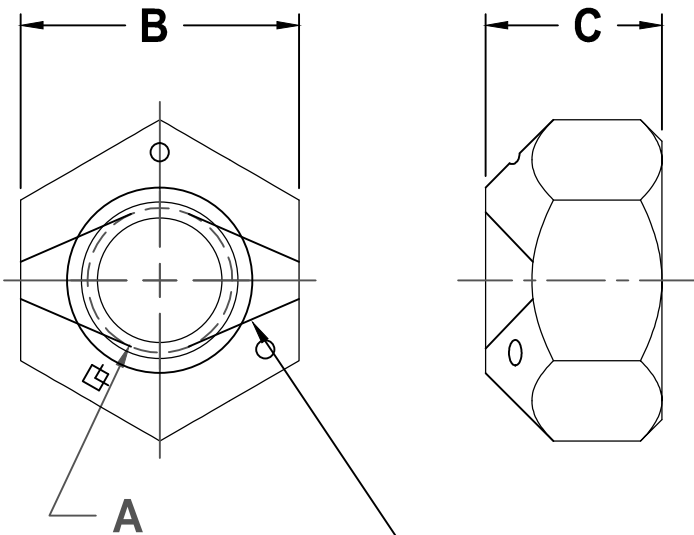
**AUTOMATION  
LOCKNUTS  
GRADE A**

**LOCKNUT  
TECHNOLOGY INC.**

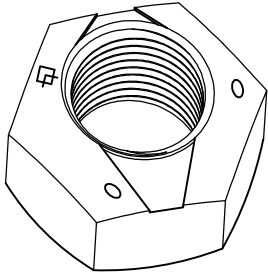
SCALE	UNITS	DWG TYPE	REV
NONE	INCH	S	NONE

**GRADE B - ZINC PLATED \***

" A " COARSE THREAD		" A " FINE THREAD		" B " WIDTH ACROSS FLATS		" C " THICKNESS	
SIZE	PART NO.	SIZE	PART NO.	MAX.	MIN.	MAX.	MIN.
1/4-20	AU1420ABZ	1/4-28	AU1428ABZ	.438	.428	.257	.243
5/16-18	AU51618ABZ	5/16-24	AU51624ABZ	.500	.489	.302	.292
3/8-16	AU3816ABZ	3/8-24	AU3824ABZ	.562	.551	.377	.360
7/16-14	AU71614ABZ	7/16-20	AU71620ABZ	.688	.675	.430	.410
1/2-13	AU1213ABZ	1/2-20	AU1220ABZ	.750	.736	.510	.490
5/8-11	AU5811ABZ	5/8-18	AU5818ABZ	.938	.922	.645	.621
3/4-10	AU3410ABZ	3/4-16	AU3416ABZ	1.125	1.088	.750	.702
7/8-9	AU789ABZ	7/8-14	AU7814ABZ	1.312	1.269	.862	.810
1-8	AU18ABZ	1-14	AU114ABZ	1.500	1.450	.958	.902
1 1/8-7	AU1187ABZ	--	---	1.690	1.631	1.176	.939



**OPPOSING THREAD DEFLECTIONS FOR PREVAILING TORQUE**



**NOTES:**

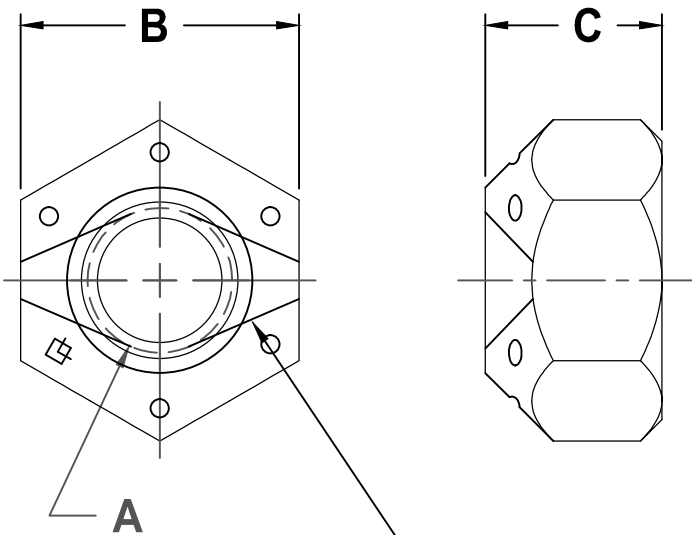
1 - MECHANICAL AND PERFORMANCE REQUIREMENTS PER IFI 100/107

\* COMMON FINISHES LISTED - OTHER FINISHES AVAILABLE

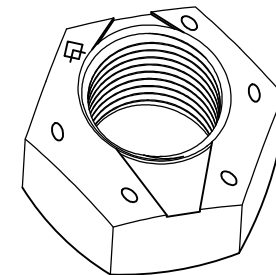
**AUTOMATION  
LOCKNUTS  
GRADE B**



SCALE	UNITS	DWG TYPE	REV
NONE	INCH	S	NONE



**OPPOSING THREAD  
DEFLECTIONS FOR  
PREVAILING TORQUE**



**GRADE C - CAD PLATED \***

" A " COARSE THREAD		" A " FINE THREAD		" B " WIDTH ACROSS FLATS		" C " THICKNESS	
SIZE	PART NO.	SIZE	PART NO.	MAX.	MIN.	MAX.	MIN.
1/4-20	AU1420ACC	1/4-28	AU1428ACC	.438	.428	.226	.212
5/16-18	AU51618ACC	5/16-24	AU51624ACC	.500	.489	.273	.258
3/8-16	AU3816ACC	3/8-24	AU3824ACC	.562	.551	.337	.320
7/16-14	AU71614ACC	7/16-20	AU71620ACC	.688	.675	.385	.365
1/2-13	AU1213ACC	1/2-20	AU1220ACC	.750	.736	.448	.427
9/16-12	AU91612ACC	9/16-18	AU91618ACC	.875	.861	.496	.473
5/8-11	AU5811ACC	5/8-18	AU5818ACC	.938	.922	.559	.535
3/4-10	AU3410ACC	3/4-16	AU3416ACC	1.125	1.088	.665	.617
7/8-9	AU789ACC	7/8-14	AU7814ACC	1.312	1.269	.776	.724
1-8	AU18ACC	1-14	AU114ACC	1.500	1.450	.887	.831
1 1/8-7	AU1187ACC	1 1/8-12	AU11812ACC	1.690	1.631	.999	.939
1 1/4-7	AU1147ACC	1 1/4-12	AU11412ACC	1.875	1.812	1.094	1.030
--	---	1 3/8-12	AU13812ACC	2.062	1.994	1.206	1.138
--	---	1 1/2-12	AU11212ACC	2.250	2.175	1.317	1.245

**NOTES:**

1 - MECHANICAL AND PERFORMANCE REQUIREMENTS PER IFI 100/107

**\* COMMON FINISHES LISTED - OTHER FINISHES AVAILABLE**

**AUTOMATION  
LOCKNUTS  
GRADE C**



SCALE	UNITS	DWG TYPE	REV
NONE	INCH	S	NONE