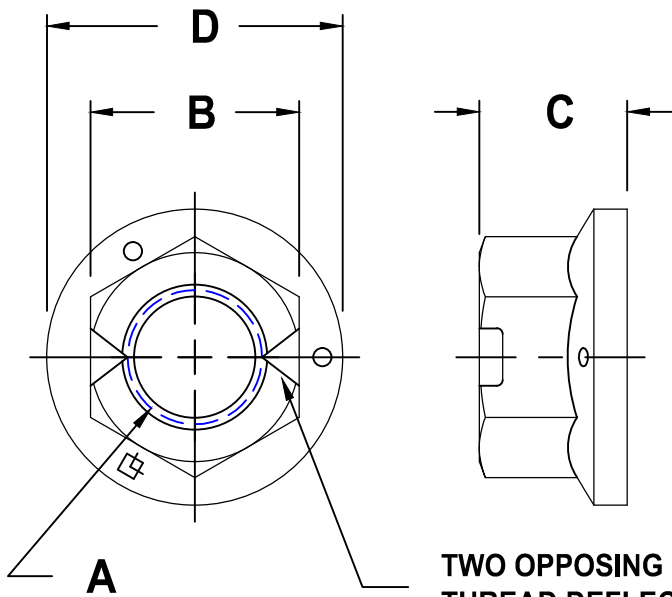
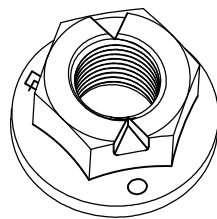


GRADE B - ZINC PLATED *									
" A " COARSE THREAD		" A " FINE THREAD		" B " WIDTH ACROSS FLATS		" C " THICKNESS		" D " FLANGE DIA.	
SIZE	PART NO.	SIZE	PART NO.	MAX.	MIN.	MAX.	MIN.	MAX.	MIN.
1/4-20	SF1420WFZ	1/4-28	---	.438	.428	.236	.222	.560	.530
1/4-20	RF1420WFZ	1/4-28	---	.438	.428	.236	.222	.594	.574
5/16-18	RF51618WFZ	5/16-24	RF51624WFZ	.500	.489	.283	.268	.680	.660
3/8-16	RF3816WFZ	3/8-24	RF3824WFZ	.562	.551	.347	.330	.750	.728
7/16-14	RF71614WFZ	7/16-20	---	.688	.675	.395	.375	.937	.910
1/2-13	RF1213WFZ	1/2-20	RF1220WFZ	.750	.736	.458	.437	1.031	1.000
5/8-11	RF5811WFZ	5/8-18	---	.938	.922	.569	.545	1.330	---



TWO OPPOSING
THREAD DEFLECTIONS
FOR PREVAILING TORQUE
SHAPE AS SHOWN



NOTES:

1 - MECHANICAL AND PERFORMANCE REQUIREMENTS PER IFI 100/107

* COMMON FINISHES LISTED - OTHER FINISHES AVAILABLE

FLANGE NUT

WRAP LOCK

GRADE F



SCALE	UNITS	DWG TYPE	REV
NONE	INCH	S	NONE