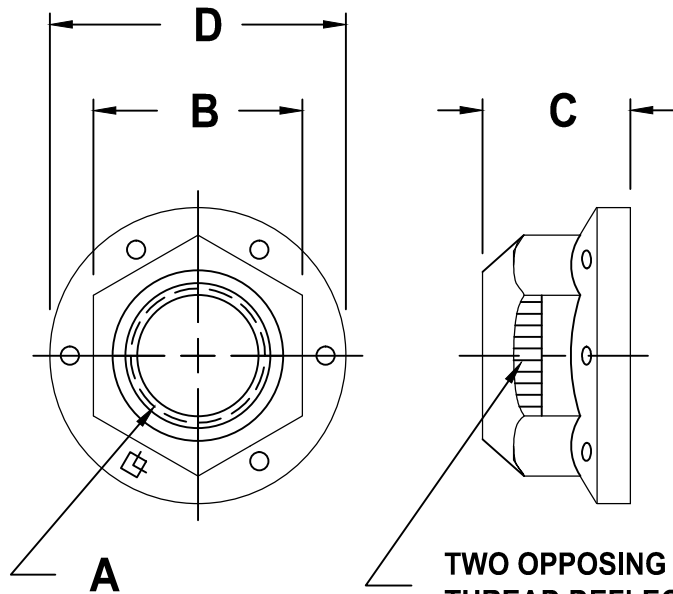
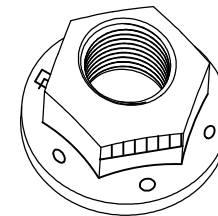


GRADE G - ZINC PLATED *

" A " COARSE THREAD		" A " FINE THREAD		" B " WIDTH ACROSS FLATS		" C " THICKNESS	" D " FLANGE DIA.
SIZE	PART NO.	SIZE	PART NO.	MAX.	MIN.	MAX.	MAX.
1/4-20	AF14200GZ	1/4-28	AF14280GZ	.438	.428	.300	.560
5/16-18	AF516180GZ	5/16-24	AF516240GZ	.502	.489	.365	.680
3/8-16	---	3/8-24	---	.565	.551	.425	.810
7/16-14	---	7/16-20	---	.690	.675	.495	.930
1/2-13	AF12130GZ	1/2-20	AF12200GZ	.752	.736	.555	1.070
5/8-11	AF58110GZ	5/8-18	AF58180GZ	.940	.922	.690	1.330
3/4-10	AF34100GZ	3/4-16	AF34160GZ	1.127	1.088	.825	1.585
1-8	---	1-14	---	1.502	1.450	1.060	2.060



TWO OPPOSING
THREAD DEFLECTIONS
FOR PREVAILING TORQUE
SHAPE AS SHOWN



NOTES:

1 - MECHANICAL AND PERFORMANCE REQUIREMENTS PER IFI 100/107

* COMMON FINISHES LISTED - OTHER FINISHES AVAILABLE

FLANGE CONE
OVAL LOCK
GRADE G

LOCKNUT
TECHNOLOGY INC.

SCALE	UNITS	DWG TYPE	REV
NONE	INCH	S	NONE