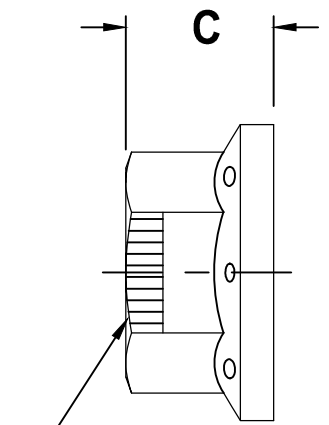
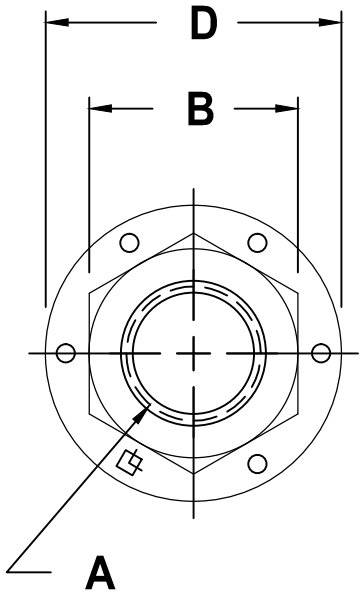
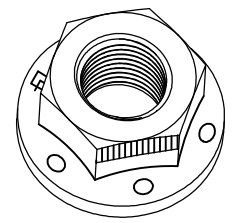


| GRADE G | | | | | | | |
|---------------------|-----------|-------------------|----------|--------------------------|-------|-----------------|-------------------|
| " A " COARSE THREAD | | " A " FINE THREAD | | " B " WIDTH ACROSS FLATS | | " C " THICKNESS | " D " FLANGE DIA. |
| SIZE | PART NO. | SIZE | PART NO. | MAX. | MIN. | MAX. | MAX. |
| 1/4-20 | RF14200G | 1/4-28 | --- | .438 | .428 | .300 | .560 |
| 5/16-18 | RF516180G | 5/16-24 | --- | .502 | .489 | .365 | .680 |
| 3/8-16 | RF38160G | 3/8-24 | --- | .565 | .551 | .425 | .810 |
| 7/16-14 | RF716140G | 7/16-20 | --- | .690 | .675 | .495 | .930 |
| 1/2-13 | RF12130G | 1/2-20 | --- | .752 | .736 | .555 | 1.070 |
| 5/8-11 | RF58110G | 5/8-18 | RF58180G | .940 | .922 | .690 | 1.330 |
| 3/4-10 | RF34100G | 3/4-16 | RF34160G | 1.127 | 1.088 | .825 | 1.585 |
| 1"-8 | RF180G | 1"-14 | RF1140G | 1.502 | 1.450 | 1.060 | 2.060 |



TWO OPPOSING
THREAD DEFLECTIONS
FOR PREVAILING TORQUE
SHAPE AS SHOWN



NOTES:

1 - MECHANICAL AND PERFORMANCE REQUIREMENTS PER IFI 100/107

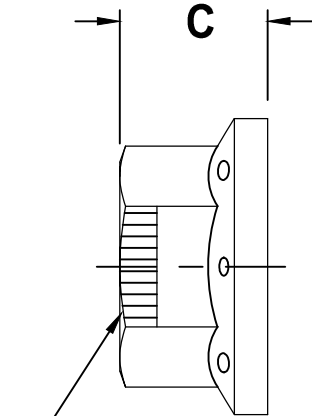
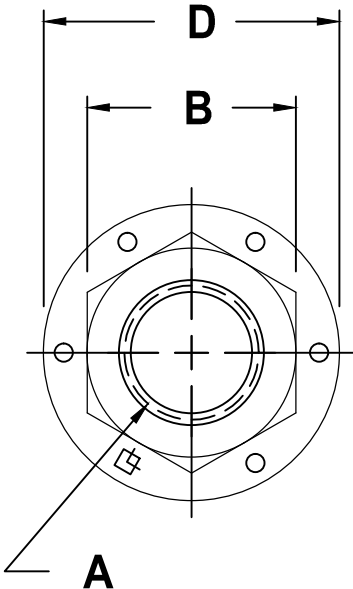
REGULAR FLANGE NUT
OVAL LOCK
GRADE G



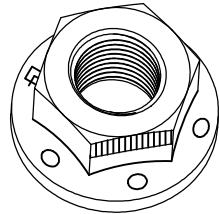
| SCALE | UNITS | DWG TYPE | REV |
|-------|-------|----------|------|
| NONE | INCH | S | NONE |

GRADE G - ZINC PLATED*

| " A " COARSE THREAD | | " A " FINE THREAD | | " B " WIDTH ACROSS FLATS | | " C " THICKNESS | " D " FLANGE DIA. |
|---------------------|------------|-------------------|------------|--------------------------|-------|-----------------|-------------------|
| SIZE | PART NO. | SIZE | PART NO. | MAX. | MIN. | MAX. | MAX. |
| 1/4-20 | --- | 1/4-28 | --- | .438 | .428 | .300 | .560 |
| 5/16-18 | --- | 5/16-24 | --- | .502 | .489 | .365 | .680 |
| 3/8-16 | RF38160GZ | 3/8-24 | RF38250GZ | .565 | .551 | .425 | .810 |
| 7/16-14 | RF716140GZ | 7/16-20 | RF716200GZ | .690 | .675 | .495 | .930 |
| 1/2-13 | --- | 1/2-20 | --- | .752 | .736 | .555 | 1.070 |
| 5/8-11 | --- | 5/8-18 | --- | .940 | .922 | .690 | 1.330 |
| 3/4-10 | RF34100GZ | 3/4-16 | --- | 1.127 | 1.088 | .825 | 1.585 |
| 7/8-9 | RF7890GZ | 7/8-14 | RF78140GZ | 1.312 | 1.269 | .790 | 1.750 |
| 1-8 | RF180GZ | 1-14 | RF1140GZ | 1.502 | 1.450 | 1.060 | 2.060 |



TWO OPPOSING
THREAD DEFLECTIONS
FOR PREVAILING TORQUE
SHAPE AS SHOWN



NOTES:

1 - MECHANICAL AND PERFORMANCE REQUIREMENTS PER IFI 100/107

* COMMON FINISHES LISTED - OTHER FINISHES AVAILABLE

REGULAR FLANGE NUT
OVAL LOCK
GRADE G



| SCALE | UNITS | DWG TYPE | REV |
|-------|-------|----------|------|
| NONE | INCH | S | NONE |