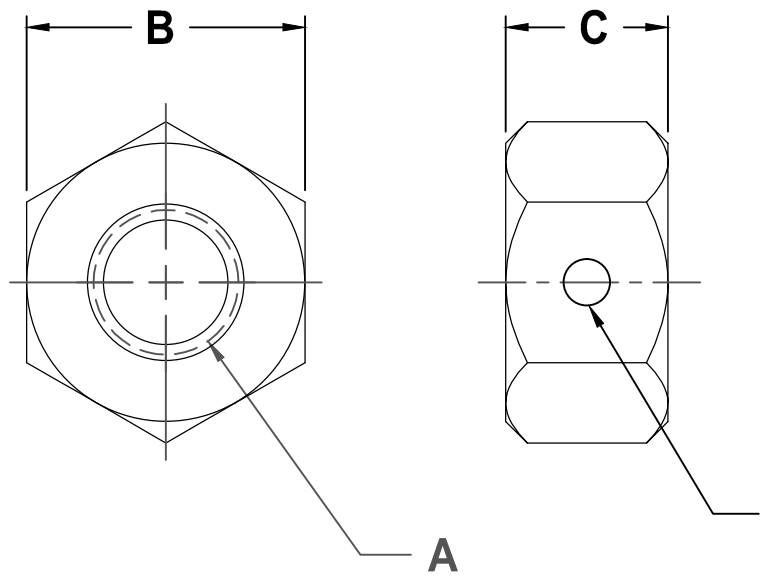
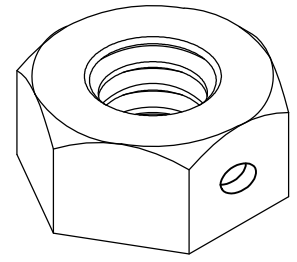


AVAILABLE IN TWO-HIT OR THREE-HIT LOCKING STYLE



SHAPE, SIZE AND LOCATION OF THE PREVAILING TORQUE ELEMENT OPTIONAL



GRADE A - ZINC / YELLOW *

" A " COARSE THREAD		" A " FINE THREAD		" B " WIDTH ACROSS FLATS		" C " THICKNESS	
SIZE	PART NO.	SIZE	PART NO.	MAX.	MIN.	MAX.	MIN.
10-24	FH1024CAZY	10-32	FH1032CAZY	.375	.362	.203	.187
1/4-20	FH1420CAZY	1/4-28	FH1428CAZY	.438	.428	.226	.212
5/16-18	FH51618CAZY	5/16-24	FH51624CAZY	.500	.489	.273	.258
3/8-16	FH3816CAZY	3/8-24	FH3824CAZY	.562	.551	.337	.320
7/16-14	FH71614CAZY	7/16-20	FH71620CAZY	.688	.675	.385	.365
1/2-13	FH1213CAZY	1/2-20	FH1220CAZY	.750	.736	.448	.427
9/16-12	FH91612CAZY	9/16-18	FH91618CAZY	.875	.861	.496	.473
5/8-11	FH5811CAZY	5/8-18	FH5818CAZY	.938	.922	.559	.535
3/4-10	FH3410CAZY	3/4-16	FH3416CAZY	1.125	1.088	.665	.617
7/8-9	FH789CAZY	7/8-14	FH7814CAZY	1.312	1.269	.776	.724
1-8	FH18CAZY	1-14	FH114CAZY	1.500	1.450	.887	.831

NOTES:

- 1 - MECHANICAL AND PERFORMANCE REQUIREMENTS PER IFI 100/107
- 2 - ALSO AVAILABLE IN GRADE "B" AND "C".

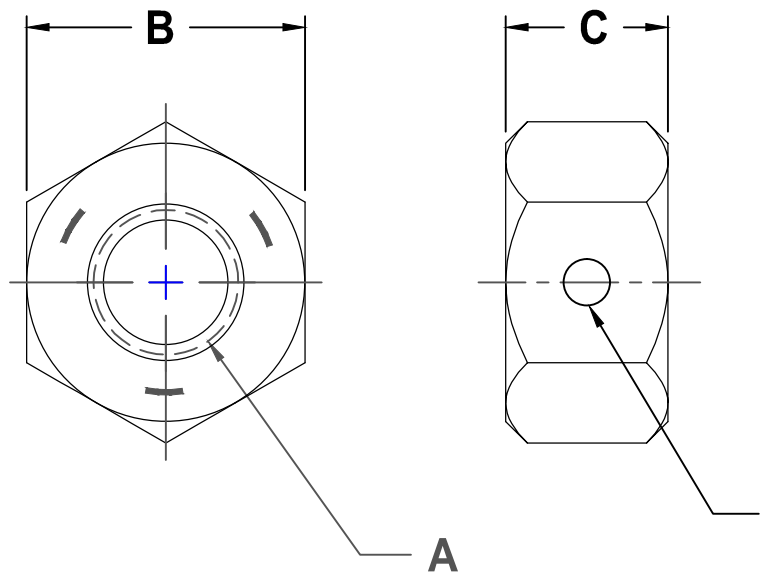
* COMMON FINISHES LISTED - OTHER FINISHES AVAILABLE

FINISHED HEX NUT
CENTERLOCK
GRADE A

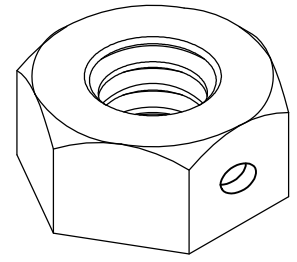


SCALE	UNITS	DWG TYPE	REV
NONE	INCH	S	NONE

AVAILABLE IN TWO-HIT OR THREE-HIT LOCKING STYLE



SHAPE, SIZE AND LOCATION OF THE PREVAILING TORQUE ELEMENT OPTIONAL



GRADE B - ZINC / YELLOW *

" A " COARSE THREAD		" A " FINE THREAD		" B " WIDTH ACROSS FLATS		" C " THICKNESS	
SIZE	PART NO.	SIZE	PART NO.	MAX.	MIN.	MAX.	MIN.
10-24	FH1024CBZY	10-32	FH1032CBZY	.375	.362	.203	.187
1/4-20	FH1420CBZY	1/4-28	FH1428CBZY	.438	.428	.226	.212
5/16-18	FH51618CBZY	5/16-24	FH51624CBZY	.500	.489	.273	.258
3/8-16	FH3816CBZY	3/8-24	FH3824CBZY	.562	.551	.337	.320
7/16-14	FH71614CBZY	7/16-20	FH71620CBZY	.688	.675	.385	.365
1/2-13	FH1213CBZY	1/2-20	FH1220CBZY	.750	.736	.448	.427
9/16-12	FH91612CBZY	9/16-18	FH91618CBZY	.875	.861	.496	.473
5/8-11	FH5811CBZY	5/8-18	FH5818CBZY	.938	.922	.559	.535
3/4-10	FH3410CBZY	3/4-16	FH3416CBZY	1.125	1.088	.665	.617
7/8-9	FH789CBZY	7/8-14	FH7814CBZY	1.312	1.269	.776	.724
1-8	FH18CBZY	1-14	FH114CBZY	1.500	1.450	.887	.831

NOTES:

- 1 - MECHANICAL AND PERFORMANCE REQUIREMENTS PER IFI 100/107
- 2 - ALSO AVAILABLE IN GRADE "A" AND "C".

* COMMON FINISHES LISTED - OTHER FINISHES AVAILABLE

FINISHED HEX NUT
CENTERLOCK
GRADE B



SCALE	UNITS	DWG TYPE	REV
NONE	INCH	S	NONE