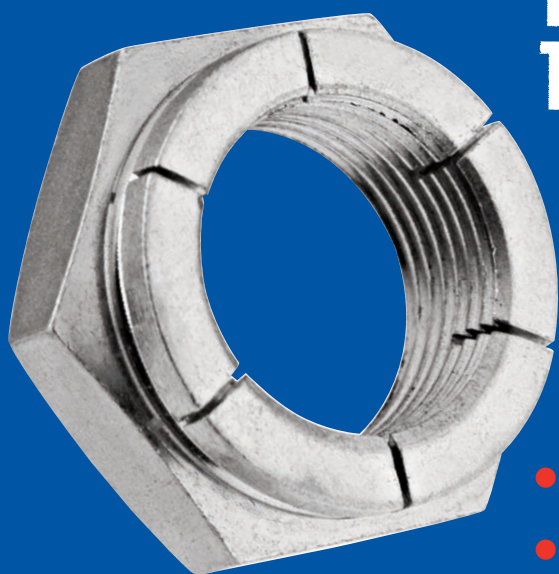


INDUSTRIAL

FLEXTOP[®]

LOCKNUTS

from
LOCKNUT
TECHNOLOGY INC.



- SELF-LOCKING
- ALL METAL



351
351 S. LOMBARD RD.
ADDISON, IL 60101

(630) 628-5330
FAX (630) 628-5331

FULL HEIGHT



THIN HEIGHT



LIMITED WARRANTY AND EXCLUSIVE REMEDY

Locknut Technology Inc. warrants that these products conform to industry standards specified herein and will be free from defects in materials and workmanship. THIS WARRANTY IS EXPRESSLY GIVEN IN LIEU OF ANY AND ALL OTHER EXPRESS OR IMPLIED WARRANTIES, INCLUDING ANY IMPLIED WARRANTY OF MERCHANTABILITY OR FITNESS FOR A PARTICULAR PURPOSE, AND IN LIEU OF ANY OTHER OBLIGATION ON THE PART OF LOCKNUT TECHNOLOGIES INC. Locknut Technologies Inc. will, at its option, repair or replace free of charge (excluding all shipping and handling costs) any products which have not been subject to misuse, abuse, or modification and which in its sole determination were not manufactured in compliance with the warranty given above.

THE REMEDY PROVIDED FOR HEREIN SHALL BE THE EXCLUSIVE REMEDY FOR ANY BREACH OF WARRANTY OR ANY CLAIM ARISING IN ANY WAY OUT OF THE MANUFACTURE, SALE, OR USE OF THESE PRODUCTS. In no event shall Locknut Technologies Inc. be liable for consequential, incidental or any other damages of any nature whatsoever except those specifically provided herein for any breach of warranty or any claim arising in any way of the manufacture, sale, or use of these products.

LOCKNUT TECHNOLOGY INC.

351 S. Lombard Avenue
Addison, Illinois 60101
Phone: (630) 628-5330
Fax: (630) 628-5331

SALES

Email: robert.motz@locknuttechnology.com

USAGE LIMITATIONS

Products in this catalog have been designed and manufactured to perform to specific standards to meet applications in industrial applications. They are not designed to meet specific standards for the Military/Aerospace markets, although interchangeability may exist.

TABLE OF CONTENTS

FLEXTOP® LOCKNUTS

Full Height Light Hex

Page 2	Thread # 2 to # 10
Page 3	Thread # 12 to # 1/2"
Page 4	Thread # 9/16" to # 1"

Thin Height Light Hex

Page 5	Thread # 6 to # 5/16"
Page 6	Thread # 3/8" to # 3/4"
Page 7	Thread # 7/8" to # 1 1/2"
Page 8	Technical Information

A WORD FROM LOCKNUT TECHNOLOGY

Locknut Technology has been supplying industry with top quality, cost efficient locknuts since 1995. Our technical leadership capabilities in manufacturing and the consistency and dependability of our products allows us to offer our customers unsurpassed quality, value and on-time delivery.

All of our locknuts incorporate a precision thread deflection process using a state-of-the-art manufacturing equipment. Our product is produced to IFI specifications 100/107 as well as prevailing torque per NASM 25027.

A WORD ABOUT QUALITY

Locknut Technology is operating under ISO9001-2000 registration to meet world class quality standards.

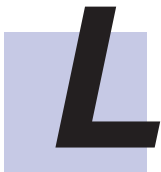
Every part is fully traceable with lot number identification on cartons packing slip and invoices. Our in-house lab is fully equipped to perform any of your certification requirements, including Level III PPAPS.

Quality is not inspected in, but built into every product using state-of-the-art production equipment. This allows us to offer special high or low torque requirements, as well as the fastest turnaround time in the industry.

Locknut Technology has extensive experience manufacturing prevailing-torque all-metal locknuts. Self-locking nuts are our only business. So, for your best value, trust our manufacturing capability, dependability and consistency of products.

Our registered product trademark is your assurance of full lot traceability and full performance satisfaction.

We shall continue to manufacture only the best quality and greatest value. We shall continue to make our products readily and dependably available, and we shall continue to dedicate ourselves to helpful service.

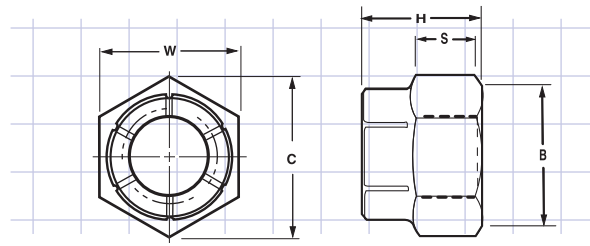


LOCKNUT TECHNOLOGY, INC.
Registered Identification Symbol

**GET THE LOCKNUT
TECHNOLOGY ADVANTAGE**

FLEXTOP® LOCKNUTS

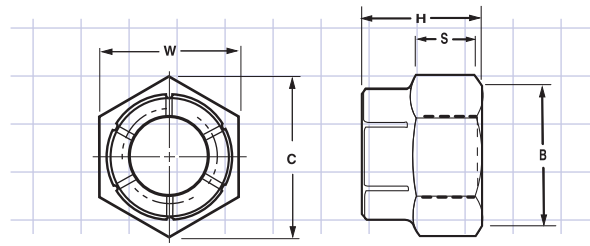
FULL HEIGHT LIGHT HEX



NOMINAL THREAD SIZE	LOCKNUT TECHNOLOGY PART NO.,	MATERIAL AND FINISH	THREAD	PROOF LOAD LB.	W WIDTH ACROSS FLATS		C WIDTH ACROSS CORNERS REF.	H THICKNESS MAX.	S HEIGHT OF HEX. MIN.	B BEARING DIA. MIN.	WEIGHT LB./100 APPROX.
					MAX.	MIN.					
#2	LTS-256	Steel - Plain	.086 - 56 UNC-3B	650	.251	.243	.277	.155	.050	.243	.15
	LTS-256C	Steel - Cadmium									
	LTS-256S	Stainless - Plain									
	LTS-256SV	Stainless - Silver									
#3	LTS-348	Steel - Plain	.099 - 48 UNC-3B	865	.251	.243	.243	.155	.050	.277	.15
	LTS-348C	Steel - Cadmium									
	LTS-348S	Stainless - Plain									
	LTS-348SV	Stainless - Silver									
#4	LTS-440	Steel - Plain	.112 - 40 UNC-3B	1,080	.251	.243	.277	.155	.050	.243	.14
	LTS-440C	Steel - Cadmium									
	LTS-440S	Stainless - Plain									
	LTS-440SV	Stainless - Silver									
	LTS-448	Steel - Plain	.112 - 48 UNF-3B	1,190	.251	.243	.277	.155	.050	.243	.14
	LTS-448C	Steel - Cadmium									
	LTS-448S	Stainless - Plain									
	LTS-448SV	Stainless - Silver									
#5	LTS-540	Steel - Plain	.125 - 40 UNC-3B	1,400	.251	.243	.277	.155	.052	.243	.13
	LTS-540C	Steel - Cadmium									
	LTS-540S	Stainless - Plain									
	LTS-540SV	Stainless - Silver									
	LTS-544	Steel - Plain	.125 - 44 UNF-3B	1,450	.251	.243	.277	.155	.052	.243	.13
	LTS-544C	Steel - Cadmium									
	LTS-544S	Stainless - Plain									
	LTS-544SV	Stainless - Silver									
#6	LTS-632	Steel - Plain	.138-32 UNC-3B	1,620	.313	.305	.347	.180	.075	.305	.27
	LTS-632C	Steel - Cadmium									
	LTS-632S	Stainless - Plain									
	LTS-632SV	Stainless - Silver									
	LTS-640	Steel- Plain	.138 - 40 UNF-3B	1,890	.313	.305	.347	.180	.075	.305	.27
	LTS-640C	Steel - Cadmium									
	LTS-640S	Stainless -Plain									
	LTS-640SV	Stainless - Silver									
#8	LTS-832	Steel - Plain	.164-32 UNC-3B	2,510	.345	.336	.383	.243	.105	.336	.46
	LTS-832C	Steel - Cadmium									
	LTS-832S	Stainless - Plain									
	LTS-832SV	Stainless - Silver									
	LTS-836	Steel - Plain	.164 - 36 UNF-3B	2,620	.345	.336	.383	.243	.105	.336	.46
	LTS-836C	Steel - Cadmium									
	LTS-836S	Stainless - Plain									
	LTS-836SV	Stainless - Silver									
#10	LTS-1024	Steel - Plain	.190-24 UNC-3B	3,120	.376	.367	.419	.243	.085	.367	.53
	LTS-1024C	Steel - Cadmium									
	LTS-1024S	Stainless - Plain									
	LTS-1024SV	Stainless - Silver									
	LTS-1032	Steel - Plain	.190 - 32 UNF-3B	3,590	.376	.367	.419	.243	.085	.367	.53
	LTS-1032C	Steel - Cadmium									
	LTS-1032S	Stainless - Plain									
	LTS-1032SV	Stainless - Silver									

FLEXTOP® LOCKNUTS

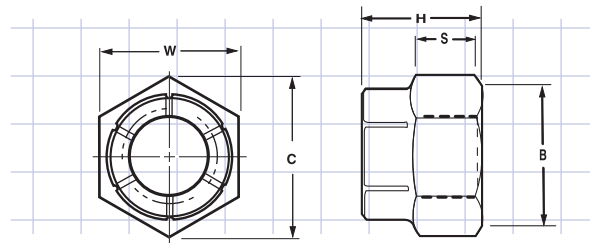
FULL HEIGHT LIGHT HEX



NOMINAL THREAD SIZE	LOCKNUT TECHNOLOGY PART NO.	MATERIAL AND FINISH	THREAD	PROOF LOAD LB.	W WIDTH ACROSS FLATS		C WIDTH ACROSS CORNERS REF.	H THICKNESS MAX.	S HEIGHT OF HEX. MIN.	B BEARING DIA. MIN.	WEIGHT LB./100 APPROX.
					MAX.	MIN.					
#12	LTS-1224	Steel - Plain	.216-24 UNC-3B	4,350	.439	.430	.491	.290	.122	.430	.89
	LTS-1224C	Steel - Cadmium									
	LTS-1224S	Stainless - Plain									
	LTS-1224SV	Stainless - Silver									
	LTS-1228	Steel - Plain	.216 - 28 UNF-3B	4,630	.439	.430	.491	.290	.122	.430	.89
	LTS-1228C	Steel - Cadmium									
	LTS-1228S	Stainless - Plain									
	LTS-1228SV	Stainless - Silver									
1/4"	LTS-420	Steel - Plain	.250-20 UNC-2B	5,730	.439	.430	.491	.290	.122	.430	.80
	LTS-420C	Steel - Cadmium									
	LTS-420S	Stainless - Plain									
	LTS-420SV	Stainless - Silver									
	LTS-428	Steel - Plain	.250 - 28 UNF-3B	6,550	.439	.430	.491	.320	.135	.430	.90
	LTS-428C	Steel - Cadmium									
	LTS-428S	Stainless - Plain									
	LTS-428SV	Stainless - Silver									
5/16"	LTS-518	Steel - Plain	.312-18 UNC-2B	9,600	.502	.492	.561	.353	.150	.492	1.30
	LTS-518C	Steel - Cadmium									
	LTS-518S	Stainless - Plain									
	LTS-518SV	Stainless - Silver									
	LTS-524	Steel - Plain	.312 - 24 UNF-3B	9,950	.502	.492	.561	.353	.150	.492	1.30
	LTS-524C	Steel - Cadmium									
	LTS-524S	Stainless - Plain									
	LTS-524SV	Stainless - Silver									
3/8"	LTS-616	Steel - Plain	.375-16 UNC-2B	13,800	.564	.553	.631	.462	.210	.553	1.95
	LTS-616C	Steel - Cadmium									
	LTS-616S	Stainless - Plain									
	LTS-616SV	Stainless - Silver									
	LTS-624	Steel - Plain	.375 - 24 UNF-3B	14,500	.564	.553	.631	.462	.210	.553	1.95
	LTS-624C	Steel - Cadmium									
	LTS-624S	Stainless - Plain									
	LTS-624SV	Stainless - Silver									
7/16"	LTS-714	Steel - Plain	.437-14 UNC-2B	14,900	.627	.616	.703	.462	.210	.616	2.30
	LTS-714C	Steel - Cadmium									
	LTS-714S	Stainless - Plain									
	LTS-714SV	Stainless - Silver									
	LTS-720	Steel - Plain	.437 - 20 UNF-3B	15,450	.627	.616	.703	.462	.210	.616	2.30
	LTS-720C	Steel - Cadmium									
	LTS-720S	Stainless - Plain									
	LTS-720SV	Stainless - Silver									
1/2"	LTS-813	Steel - Plain	.500-13 UNC-2B	22,000	.752	.741	.846	.602	.285	.741	4.35
	LTS-813C	Steel - Cadmium									
	LTS-813S	Stainless - Plain									
	LTS-813SV	Stainless - Silver									
	LTS-820	Steel - Plain	.500 - 20 UNF-3B	23,800	.752	.741	.846	.602	.285	.741	4.35
	LTS-820C	Steel - Cadmium									
	LTS-820S	Stainless - Plain									
	LTS-820SV	Stainless - Silver									

FLEXTOP® LOCKNUTS

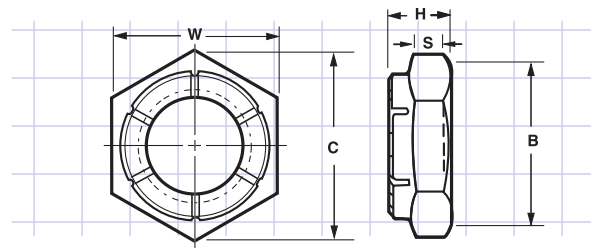
FULL HEIGHT LIGHT HEX



NOMINAL THREAD SIZE	LOCKNUT TECHNOLOGY PART NO.	MATERIAL AND FINISH	THREAD	PROOF LOAD LB.	W WIDTH ACROSS FLATS		C WIDTH ACROSS CORNERS REF.	H THICKNESS MAX.	S HEIGHT OF HEX. MIN	B BEARING DIA. MIN.	WEIGHT LB./100 APPROX.
					MAX.	MIN.					
9/16"	LTS-912	Steel - Plain	.562-12 UNC-2B	27,000	.877	.865	.987	.696	.385	.865	5.7
	LTS-912C	Steel - Cadmium									
	LTS-912S	Stainless - Plain									
	LTS-912SV	Stainless - Silver									
	LTS-918	Steel - Plain	.562 - 18 UNF-3B	30,000	.877	.865	.987	.696	.385	.865	7.15
	LTS-918C	Steel - Cadmium									
	LTS-918S	Stainless - Plain									
	LTS-918SV	Stainless - Silver									
5/8"	LTS-1011	Steel - Plain	.625-11 UNC-2B	34,000	.940	.928	1.059	.759	.410	.928	8.73
	LTS-1011C	Steel - Cadmium									
	LTS-1011S	Stainless - Plain									
	LTS-1011SV	Stainless - Silver									
	LTS-1018	Steel - Plain	.625 - 18 UNF-3B	38,400	.940	.928	1.059	.759	.410	.928	8.73
	LTS-1018C	Steel - Cadmium									
	LTS-1018S	Stainless - Plain									
	LTS-1018SV	Stainless - Silver									
3/4"	LTS-1210	Steel - Plain	.750-10 UNC-2B	50,000	1.064	1.052	1.200	.884	.505	1.052	12.38
	LTS-1210C	Steel - Cadmium									
	LTS-1210S	Stainless - Plain									
	LTS-1210SV	Stainless - Silver									
	LTS-1216	Steel - Plain	.750 - 16 UNF-3B	52,300	1.064	1.052	1.200	.884	.505	1.052	12.38
	LTS-1216C	Steel - Cadmium									
	LTS-1216S	Stainless - Plain									
	LTS-1216SV	Stainless - Silver									
7/8"	LTS-1409	Steel - Plain	.875-9 UNC-2B	64,600	1.252	1.239	1.414	1.009	.570	1.239	19.46
	LTS-1409C	Steel - Cadmium									
	LTS-1409S	Stainless - Plain									
	LTS-1409SV	Stainless - Silver									
	LTS-1414	Steel- Plain	.875 - 14 UNF-3B	71,400	1.252	1.239	1.414	1.009	.570	1.239	19.46
	LTS-1414C	Steel - Cadmium									
	LTS-1414S	Stainless -Plain									
	LTS-1414SV	Stainless - Silver									
1"	LTS-1608	Steel - Plain	1.000-8 UNC-2B	85,000	1.440	1.427	1.628	1.134	.635	1.427	28.52
	LTS-1608C	Steel - Cadmium									
	LTS-1608S	Stainless - Plain									
	LTS-1608SV	Stainless - Silver									
	LTS-1612	Steel - Plain	1.000 - 12 UNF-3B	90,500	1.440	1.427	1.628	1.134	.635	1.427	28.52
	LTS-1612C	Steel - Cadmium									
	LTS-1612S	Stainless - Plain									
	LTS-1612SV	Stainless - Silver									
	LTS-1614	Steel - Plain	1.000 - 14 UNF-3B	92,500	1.440	1.427	1.628	1.134	.635	1.427	28.52
	LTS-1614C	Steel - Cadmium									
	LTS-1614S	Stainless - Plain									
	LTS-1614SV	Stainless - Silver									

FLEXTOP® LOCKNUTS

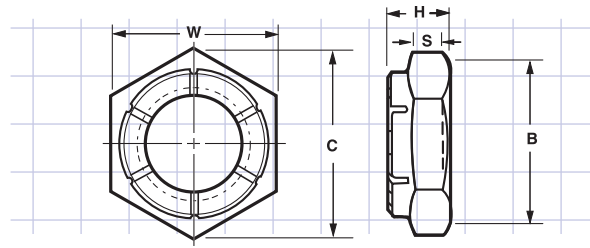
THIN HEIGHT LIGHT HEX



NOMINAL THREAD SIZE	LOCKNUT TECHNOLOGY PART NO.	MATERIAL AND FINISH	THREAD	PROOF LOAD LB.	W WIDTH ACROSS FLATS		C WIDTH ACROSS CORNERS REF.	H THICKNESS MAX.	S HEIGHT OF HEX. MIN	B BEARING DIA. MIN.	WEIGHT LB./100 APPROX.
					MAX.	MIN.					
#6	LTT-632	Steel - Plain	.138 - 32 UNC-3B	1,270	.313	.305	.347	.141	.036	.305	.20
	LTT-632C	Steel - Cadmium									
	LTT-632S	Stainless - Plain									
	LTT-632SV	Stainless - Silver									
	LTT-640	Steel - Plain	.138 - 40 UNF-3B	1,420	.313	.305	.347	.141	.036	.305	.20
	LTT-640C	Steel - Cadmium									
	LTT-640S	Stainless - Plain									
	LTT-640SV	Stainless - Silver									
#8	LTT-832	Steel - Plain	.164 - 32 UNC-3B	1,960	.345	.336	.383	.188	.070	.336	.35
	LTT-832C	Steel - Cadmium									
	LTT-832S	Stainless - Plain									
	LTT-832SV	Stainless - Silver									
	LTT-836	Steel - Plain	.164 - 36 UNF-3B	2,060	.345	.336	.383	.188	.070	.336	.35
	LTT-836C	Steel - Cadmium									
	LTT-836S	Stainless - Plain									
	LTT-836SV	Stainless - Silver									
#10	LTT-1024	Steel - Plain	.190 - 24 UNC-3B	2,340	.376	.367	.419	.188	.065	.367	.38
	LTT-1024C	Steel - Cadmium									
	LTT-1024S	Stainless - Plain									
	LTT-1024SV	Stainless - Silver									
	LTT-1032	Steel - Plain	.190 - 32 UNF-3B	2,800	.376	.367	.419	.188	.065	.367	.38
	LTT-1032C	Steel - Cadmium									
	LTT-1032S	Stainless - Plain									
	LTT-1032SV	Stainless - Silver									
#12	LTT-1224	Steel - Plain	.216 - 24 UNC-3B	3,380	.439	.430	.491	.209	.071	.430	.62
	LTT-1224C	Steel - Cadmium									
	LTT-1224S	Stainless - Plain									
	LTT-1224SV	Stainless - Silver									
	LTT-1228	Steel - Plain	.216 - 28 UNF-3B	3,610	.439	.430	.491	.209	.071	.430	.62
	LTT-1228C	Steel - Cadmium									
	LTT-1228S	Stainless - Plain									
	LTT-1228SV	Stainless - Silver									
1/4"	LTT-420	Steel - Plain	.250 - 20 UNC-2B	4,450	.439	.430	.491	.219	.075	.430	.61
	LTT-420C	Steel - Cadmium									
	LTT-420S	Stainless - Plain									
	LTT-420SV	Stainless - Silver									
	LTT-428	Steel - Plain	.250 - 28 UNF-3B	5,090	.439	.430	.491	.219	.075	.430	.90
	LTT-428C	Steel - Cadmium									
	LTT-428S	Stainless - Plain									
	LTT-428SV	Stainless - Silver									
5/16"	LTT-518	Steel - Plain	.312 - 18 UNC-2B	4,980	.502	.492	.561	.266	.097	.492	.97
	LTT-518C	Steel - Cadmium									
	LTT-518S	Stainless - Plain									
	LTT-518SV	Stainless - Silver									
	LTT-524	Steel - Plain	.312 - 24 UNF-3B	5,510	.502	.492	.561	.266	.097	.492	.97
	LTT-524C	Steel - Cadmium									
	LTT-524S	Stainless - Plain									
	LTT-524SV	Stainless - Silver									

FLEXTOP® LOCKNUTS

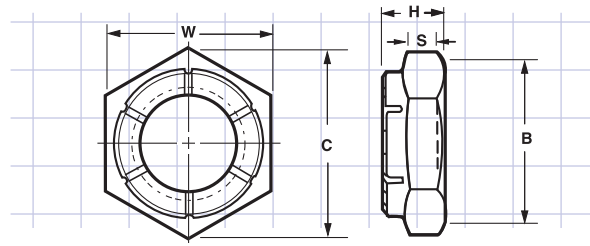
THIN HEIGHT LIGHT HEX



NOMINAL THREAD SIZE	LOCKNUT TECHNOLOGY PART NO.	MATERIAL AND FINISH	THREAD	PROOF LOAD LB.	W WIDTH ACROSS FLATS		C WIDTH ACROSS CORNERS REF.	H THICKNESS MAX.	S HEIGHT OF HEX. MIN	B BEARING DIA. MIN.	WEIGHT LB./100 APPROX.
					MAX.	MIN.					
3/8"	LTT-616	Steel - Plain	.375 - 16 UNC-2B	7,360	.564	.553	.631	.282	.108	.553	1.69
	LTT-616C	Steel - Cadmium									
	LTT-616S	Stainless - Plain									
	LTT-616SV	Stainless - Silver									
3/8"	LTT-624	Steel - Plain	.375 - 24 UNF-3B	8,340	.564	.553	.631	.282	.108	.553	1.69
	LTT-624C	Steel - Cadmium									
	LTT-624S	Stainless - Plain									
	LTT-624SV	Stainless - Silver									
7/16"	LTT-714	Steel - Plain	.437-14 UNC-2B	10,100	.627	.616	.703	.328	.138	.616	1.71
	LTT-714C	Steel - Cadmium									
	LTT-714S	Stainless - Plain									
	LTT-714SV	Stainless - Silver									
7/16"	LTT-720	Steel - Plain	.437 - 20 UNF-3B	11,300	.627	.616	.703	.328	.138	.616	1.71
	LTT-720C	Steel - Cadmium									
	LTT-720S	Stainless - Plain									
	LTT-720SV	Stainless - Silver									
1/2"	LTT-813	Steel - Plain	.500-13 UNC-2B	11,400	.752	.741	.846	.328	.121	.741	2.39
	LTT-813C	Steel - Cadmium									
	LTT-813S	Stainless - Plain									
	LTT-813SV	Stainless - Silver									
1/2"	LTT-820	Steel - Plain	.500 - 20 UNF-3B	12,800	.752	.741	.846	.328	.121	.741	2.39
	LTT-820C	Steel - Cadmium									
	LTT- 820S	Stainless - Plain									
	LTT- 820SV	Stainless - Silver									
9/16"	LTT-912	Steel - Plain	.562-12 UNC-2B	14,600	.877	.865	.987	.368	.135	.865	3.66
	LTT-912C	Steel - Cadmium									
	LTT-912S	Stainless - Plain									
	LTT-912SV	Stainless - Silver									
9/16"	LTT-918	Steel - Plain	.562 - 18 UNF-3B	16,200	.877	.865	.987	.368	.135	.865	3.66
	LTT-918C	Steel - Cadmium									
	LTT-918S	Stainless - Plain									
	LTT-918SV	Stainless - Silver									
5/8"	LTT-1011	Steel - Plain	.625-11 UNC-2B	18,100	.940	.928	1.059	.399	.147	.928	4.38
	LTT-1011C	Steel - Cadmium									
	LTT-1011S	Stainless - Plain									
	LTT-1011SV	Stainless - Silver									
5/8"	LTT-1018	Steel - Plain	.625 - 18 UNF-3B	20,500	.940	.928	1.059	.399	.147	.928	4.38
	LTT-1018C	Steel - Cadmium									
	LTT-1018S	Stainless - Plain									
	LTT-1018SV	Stainless - Silver									
3/4"	LTT-1210	Steel - Plain	.750-10 UNC-2B	26,800	1.064	1.052	1.200	.415	.155	1.052	6.04
	LTT-1210C	Steel - Cadmium									
	LTT-1210S	Stainless - Plain									
	LTT-1210SV	Stainless - Silver									
3/4"	LTT-1216	Steel - Plain	.750 - 16 UNF-3B	29,800	1.064	1.052	1.200	.415	.155	1.052	6.04
	LTT-1216C	Steel - Cadmium									
	LTT-1216S	Stainless - Plain									
	LTT-1216SV	Stainless - Silver									

FLEXTOP® LOCKNUTS

THIN HEIGHT LIGHT HEX



NOMINAL THREAD SIZE	LOCKNUT TECHNOLOGY PART NO.	MATERIAL AND FINISH	THREAD	PROOF LOAD LB.	W WIDTH ACROSS FLATS		C WIDTH ACROSS CORNERS REF.	H THICKNESS MAX.	S HEIGHT OF HEX. MIN	B BEARING DIA. MIN.	WEIGHT LB./100 APPROX.
					MAX.	MIN.					
7/8"	LTT-1409	Steel - Plain	.875-9 UNC-2B	36,940	1.252	1.239	1.414	.477	.166	1.239	9.44
	LTT-1409C	Steel - Cadmium									
	LTT-1409S	Stainless - Plain									
	LTT-1409SV	Stainless - Silver									
	LTT-1414	Steel - Plain	.875 - 14 UNF-3B	40,800	1.252	1.239	1.414	.477	.166	1.239	9.44
	LTT-1414C	Steel - Cadmium									
	LTT-1414S	Stainless - Plain									
	LTT-1414SV	Stainless - Silver									
1"	LTT-1608	Steel - Plain	1.000-8 UNC-2B	48,500	1.440	1.427	1.628	.571	.218	1.427	15.24
	LTT-1608C	Steel - Cadmium									
	LTT-1608S	Stainless - Plain									
	LTT-1608SV	Stainless - Silver									
	LTT-1612	Steel - Plain	1.000 - 12 UNF-3B	53,000	1.440	1.427	1.628	.571	.218	1.427	15.24
	LTT-1612C	Steel - Cadmium									
	LTT-1612S	Stainless - Plain									
	LTT-1612SV	Stainless - Silver									
	LTT-1614	Steel - Plain	1.000 - 14 UNS-3B	54,400	1.440	1.427	1.628	.571	.218	1.427	15.24
	LTT-1614C	Steel - Cadmium									
	LTT-1614S	Stainless - Plain									
	LTT-1614SV	Stainless - Silver									
1-1/8"	LTT-1812	Steel - Plain	1.125-12 UNF-3B	68,500	1.627	1.614	1.842	.634	.238	1.614	19.19
	LTT-1812C	Steel - Cadmium									
	LTT-1812S	Stainless - Plain									
	LTT-1812SV	Stainless - Silver									
1-1/4"	LTT-2012	Steel - Plain	1.250-12 UNF-3B	85,800	1.814	1.801	2.056	.759	.311	1.801	39.14
	LTT-2012C	Steel - Cadmium									
	LTT-2012S	Stainless - Plain									
	LTT-2012SV	Stainless - Silver									
1-3/8"	LTT-2212	Steel - Plain	1.375-12 UNF-3B	90,700	2.002	1.988	2.269	.821	.325	1.988	41.99
	LTT-2212C	Steel - Cadmium									
	LTT-2212S	Stainless - Plain									
	LTT-2212SV	Stainless - Silver									
1-1/2"	LTT-2412	Steel - Plain	1.500-12 UNF-3B	109,000	2.190	2.176	2.484	.884	.350	2.176	57.56
	LTT-2412C	Steel - Cadmium									
	LTT-2412S	Stainless - Plain									
	LTT-2412SV	Stainless - Silver									

TECHNICAL

UNIFIED THREADS

FLEXTOP® locknuts are available in both Unified Coarse and Unified Fine Thread Series. They are made with Class 2B and Class 3B thread fit.

THREAD CLASS

Light Hex

UNC-3B - #2 through #12

UNC-2B - 1/4" through 2"

UNF-3B - #2 through 2"

Typical Tightening Torques for Cadmium Plated Steel FLEXTOP® Nuts on Cadmium Plated or Unplated Bolts

size	threads per in.	40,000 psi preload*		90,000 psi preload*	
		tightening torque (inch-lb.)	load (in pounds)	tightening torque (inch-lb.)	load (in pounds)
1/4	20	28	1270	115	2 860
	28	60	1,450	130	3,275
5/16	18	100	2,100	230	4,720
	24	110	2,300	250	5,200
3/8	16	170	3,100	385	7,000
	24	190	3,500	425	7,900
7/16	14	260	4,270	575	9,600
	20	280	4,760	630	10,700
1/2	13	375	5,700	840	12,800
	20	420	6,400	940	14,400
9/16	12	510	7,300	1,150	16,400
	18	580	8,100	1,300	18,300
5/8	11	690	9,000	1,550	20,300
	18	780	10,200	1,750	23,000
3/4	10	1,100	13,400	2,400	30,100
	16	1,200	14,900	2,650	33,600
7/8	9	1,500	18,500	3,300	41,600
	14	1,600	20,200	3,650	45,900
1	8	2,000	24,200	4,400	54,500
	12	2,150	26,500	4,800	59,700
1-1/8	14	2,200	26,700	4,850	60,200
	7	2,500	30,500	5,700	68,700
1-1/4	12	2,800	34,200	6,300	77,000
	7	3,400	38,800	7,600	87,300
1-3/8	12	3,700	42,900	8,300	96,600
	6	4,200	46,200	9,500	103,900
1-1/2	12	4,800	52,500	10,800	118,300
	6	5,600	55,700	12,600	126,500
	12	6,300	63,100	14,200	142,300

REUSABILITY

All FLEXTOP® locknuts, except those made of stainless steel without silver plating, meet the locking torque requirements of MIL-N-25027. Tests required by MIL-N-25027 include 15 unseated installation and removal cycles with the bolt fully engaging the locking area on each cycle.

Unplated Stainless Steel

FLEXTOP® locknuts are coated with a torque-tension control fluid (wax-type) to minimize galling. However, they are not recommended for applications requiring reusability.

FINISHES

MATERIAL	FINISH
Steel	Plain or Cadmium Plated
Stainless Steel	Plain or Silver Plated

Nuts with these finishes are listed in this catalog. For special application, a wide variety of other finishes is available, including zinc, phos/oil, and passivation.

FLEXTOP® MAXIMUM TEMPERATURE LIMITS

	MATERIAL		FINISH	
	PLAIN	CADMIUM	SILVER	ZINC
STEEL	500°F 290°C	450°F 235°C	550°F 290°C	450°F 235°C
STAINLESS STEEL	800°F 425°C	450°F 235°C	800°F 425°C	450°F 235°C

WARNING: Every bolted joint is unique and the optimum tightening torque should be determined for each application after careful consideration.

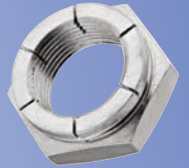
TECHNICAL SPECIFICATIONS

TORQUE UNIFORMITY

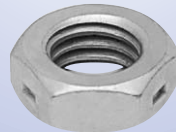
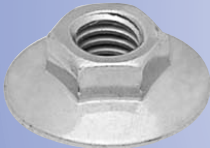
FLEXTOP® Locknuts are produced on modern, precision equipment designed exclusively for this purpose. Locking torques are held to very close limits to permit uniform control of preload in the assembly process.

Unlike some poor quality imports, all of our “locking” is done at our production facility in Illinois, USA. With our precision manufacturing methods you can be assured of uniformly close control of locking torques.

LOCKNUT TECHNOLOGY INC.



*Manufacturer and Processor of
Torque Locknut & Flextop Locknuts*



**GET THE LOCKNUT
TECHNOLOGY ADVANTAGE**